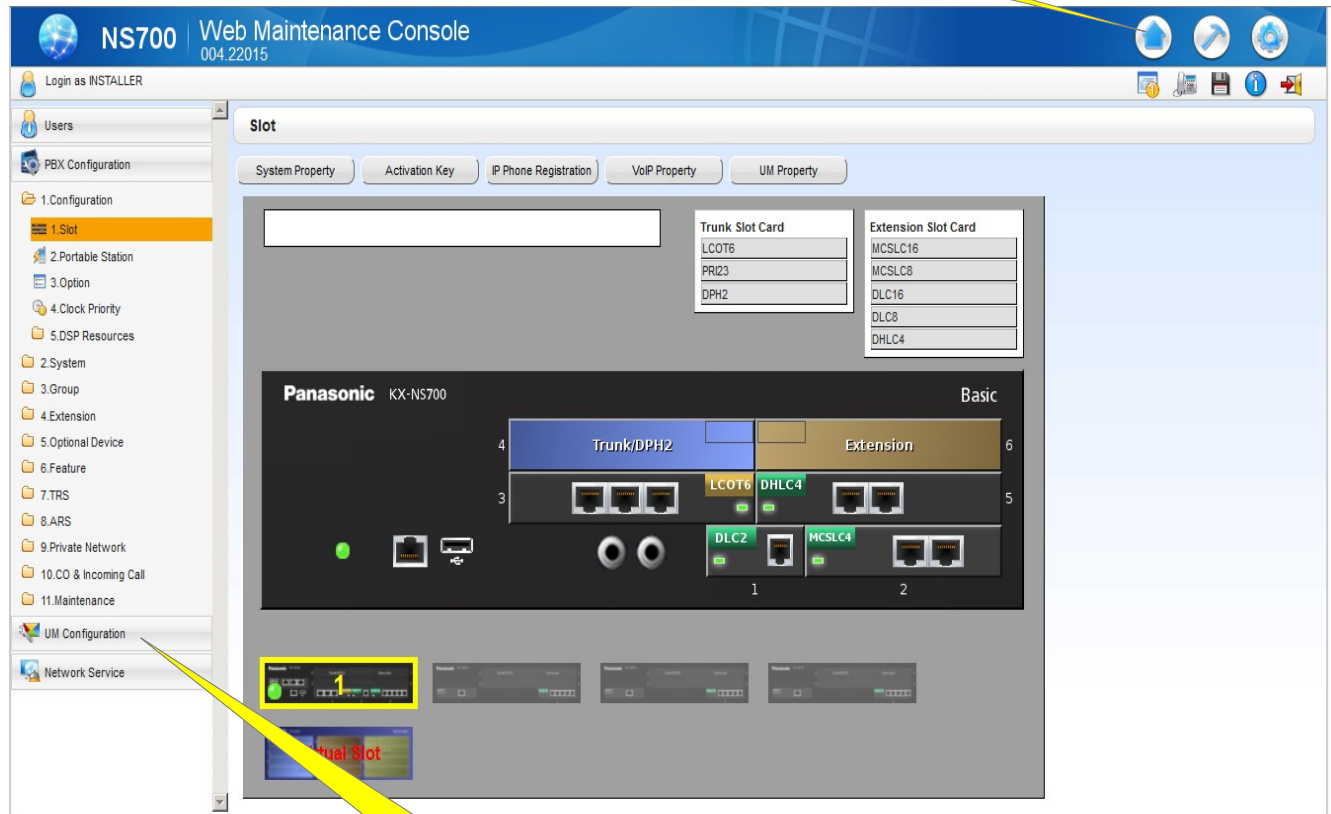


Panasonic KX-NS700 Set Passwords for UM Managers Telquest Tech Support

Connect to the KX-NS700 System, then:

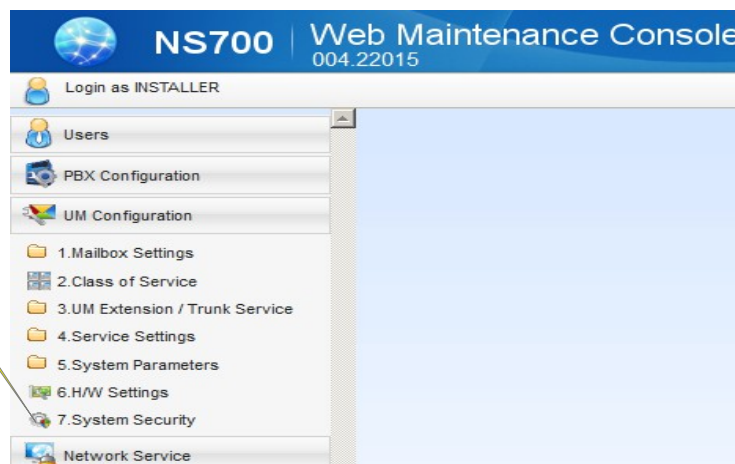
1. Click Here...



2. Click Here...

Next Screen:

1. Click Here...



Enable Managers and set passwords:

NS700 Web Maintenance Console 004.22015

Login as INSTALLER

System Security

Manager Subscriber

Login Failures before Disconnection (1-99 times) : 3

System Manager Access from Telephone : Enable

Set Password : Click To Edit..

Password for System Manager (Up to 16 numeric digits)

Set Password : Click To Edit..

Password for System Manager (Message Client)

Message Manager Access from Telephone : Enable

Set Password : Click To Edit..

Password for Message Manager (Up to 16 numeric digits)

Set Password : Click To Edit..

Click To Edit..

Do Not Edit or set passord

When you “Click to Edit...” the passwords, make them all the same if possible.

You should try to use 8 digits or more.

Do Not use 1234, 2468 or something simple unless you want to get hacked.....

System Manager Password

Enter new password ["0-9"] :

Confirm new password ["0-9"] :

OK Cancel

Click when password has been entered

Click when done entering all passwords...

OK Cancel Apply

Special Note:

You MUST exit programming to allow Custom Service Menus to be recorded.

